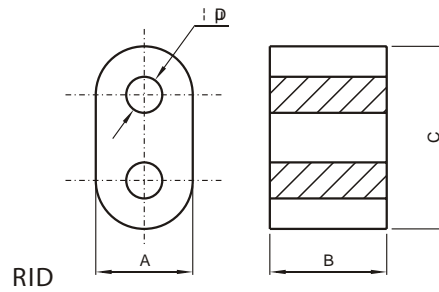


# RID & DR TYPE CORES



## RID TYPE CORES

(MATERIALS): P1, P2, P3, R5K

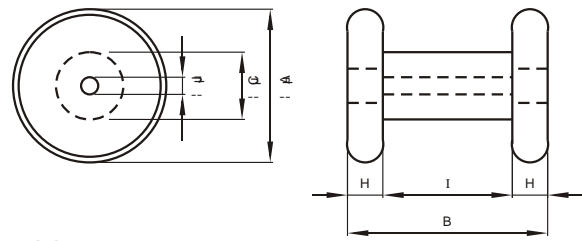
Dimensions & Effective parameter

CORES TYPE	Dimensions(mm)				Weight (g)
	A	B	C	ϕ	
8×7×15	8.2±0.3	7.0±0.3	15.3±0.6	5.0±0.3	1.8
7.5×10.3×13.3	7.5±0.3	10.3±0.4	13.±0.6	4.2±0.25	2.8
7.25×4.2×6.2	4.2-0.4	6.2-0.5	7.25-0.5	1.81±0.3	1.3

## DR TYPE CORES

(MATERIALS):H5K, P1, P2

Dimensions & Effective parameter



DR

CORES TYPE	Dimensions(mm)						Weight (g)
	ϕ A	B	ϕ	H	I	ϕ	
DR1415	14±0.8	15±1.0	8±0.2	3.0	9±0.6	2.5±0.25	7
DR2214	22±1.0	14.5±1.0	12±0.3	3.5	7.5±0.6	4.5±0.3	15
DR2218	22±1.0	18.5±1.0	12.5±0.3	3.5	11.5±0.6	4.5±0.3	17
DR2820	28±1.0	20±1.5	16.95±0.35	4.0	12±0.6	4.5±0.3	34
DR2825	28±1.0	25±1.5	16.95±0.35	4.0	17±0.6	4.5±0.3	39
DR3525	35±1.0	25±1.5	20.9±0.4	3.5	18±0.6	4.75±0.25	56
DR4025	40±1.0	25±1.5	22.9±0.4	4.0	17±0.6	4.5±0.3	78
DR4030	40±1.0	30±1.5	22.9±0.4	4.0	22±0.6	4.5±0.3	90
DR4530	45±1.0	35±1.5	26.85±0.45	4.5	26±0.6	4.5±0.3	133
DR5635	56±1.5	35±1.5	32.83±0.53	5.0	25±0.6	4.5±0.3	212